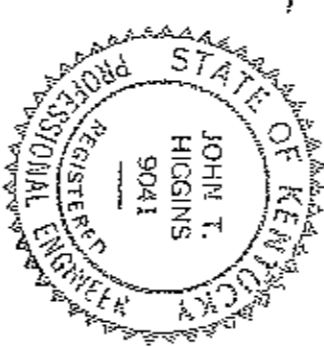


WASHBURN AVE. 50' R/W

REVISIONS		PROJECT DATA	
No.	Date	No.	Date
		200-013	4/4/1988
Description		Scale	1" = 20'
		BY	BRN.
		Checked	C.E.W.



John T. Higgins
 Registered Land Surveyor, Ky.
 Registered Professional Engineer, Ky.

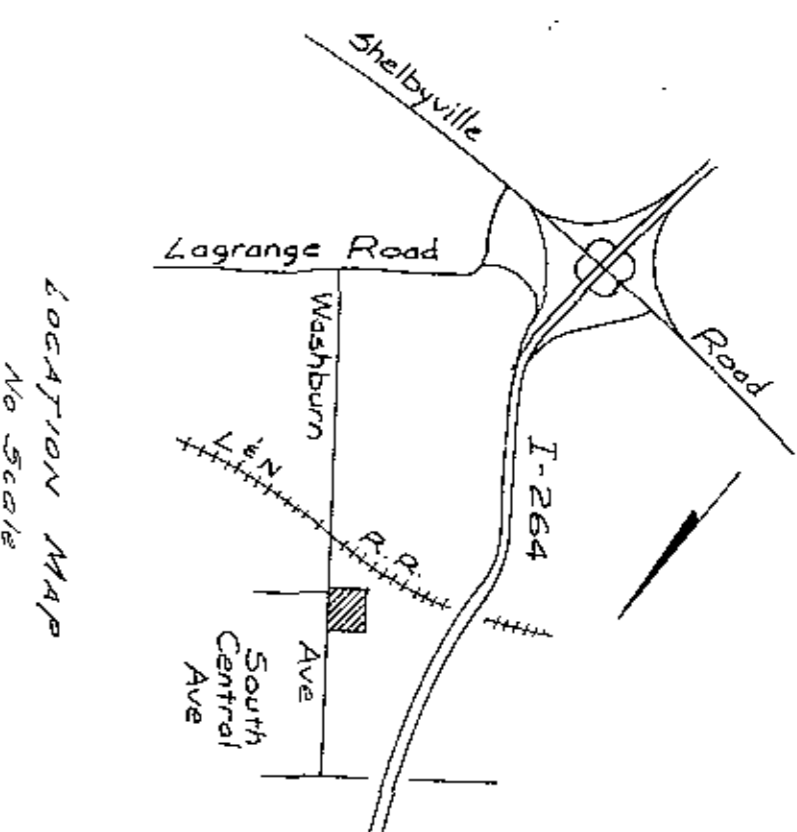


The verification and certification was sworn to before me by John T. Higgins of Daugherty and Ruhlwein, Inc. on the 12th day of August, 1988.
 My Commission Expires February 15th, 1991.
Mary L. Richardson
 Mary L. Richardson
 Notary Public

BM - Rim of Ex. Sanitary Sewer Manhole in Washburn Avenue, near north property line - Elev. 546.55

Verification and Certification

I hereby verify that these plans accurately depict the layout, location, unit numbers and dimensions of these condominiums As-Built. I hereby certify that the survey for this plan was made under my supervision and that the angular and linear measurements and the vertical elevations shown hereon are correct to the best of my knowledge and belief.



**BUILDINGS "D" and "E"
 PHASE IV and PHASE V**

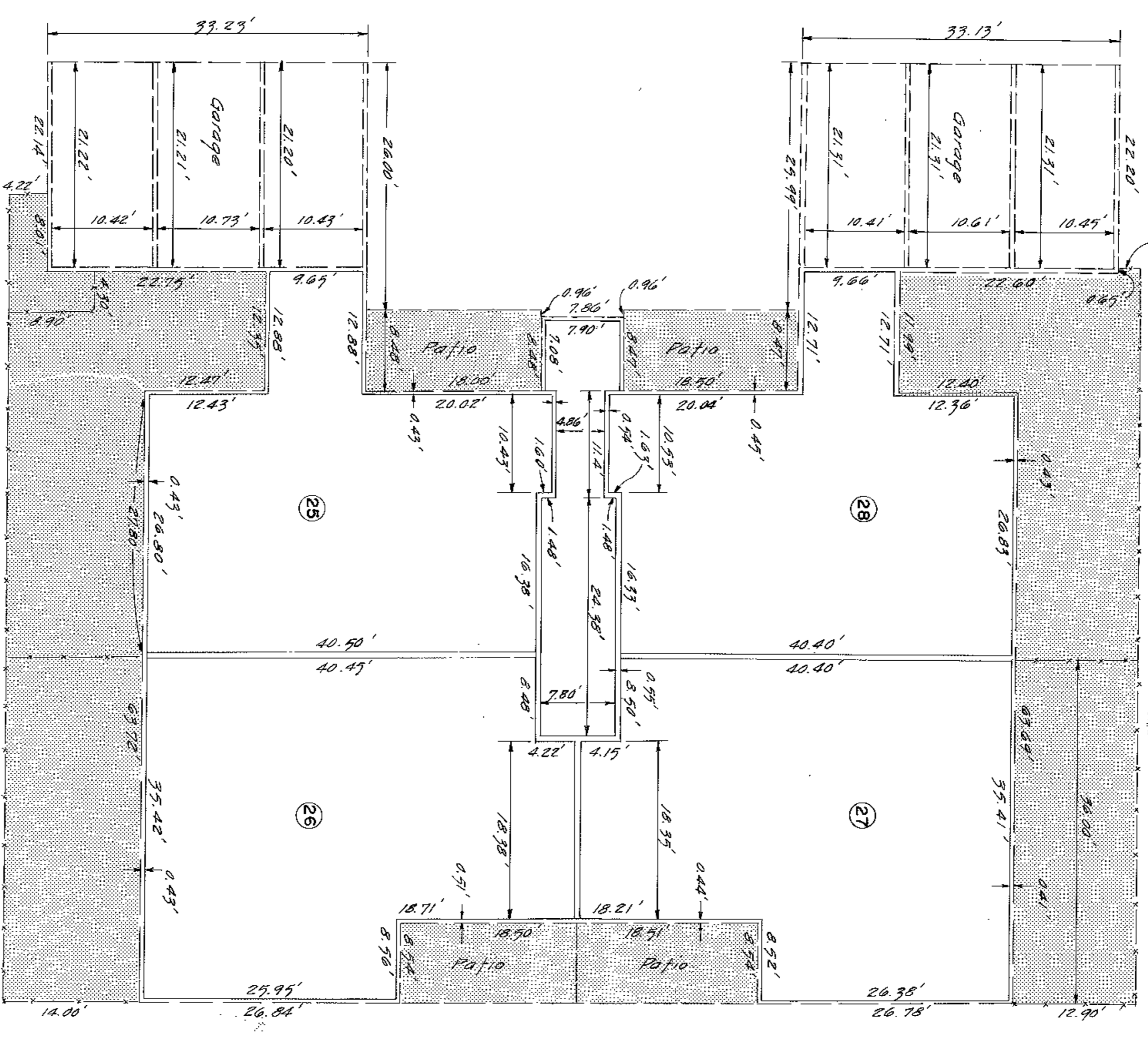
SPINDLEWICK, A CONDOMINIUM

COLSTON BUILDING & DEVELOPING CO.
 41 Highwood Drive
 Louisville, KY 40206

40x49

ROOM 5177 Part 0A

10/23/83
Partially
by
Mulligan
CONSTRUCTION
OR
FOR DIRECTING S.D.
DATE 10/23/83



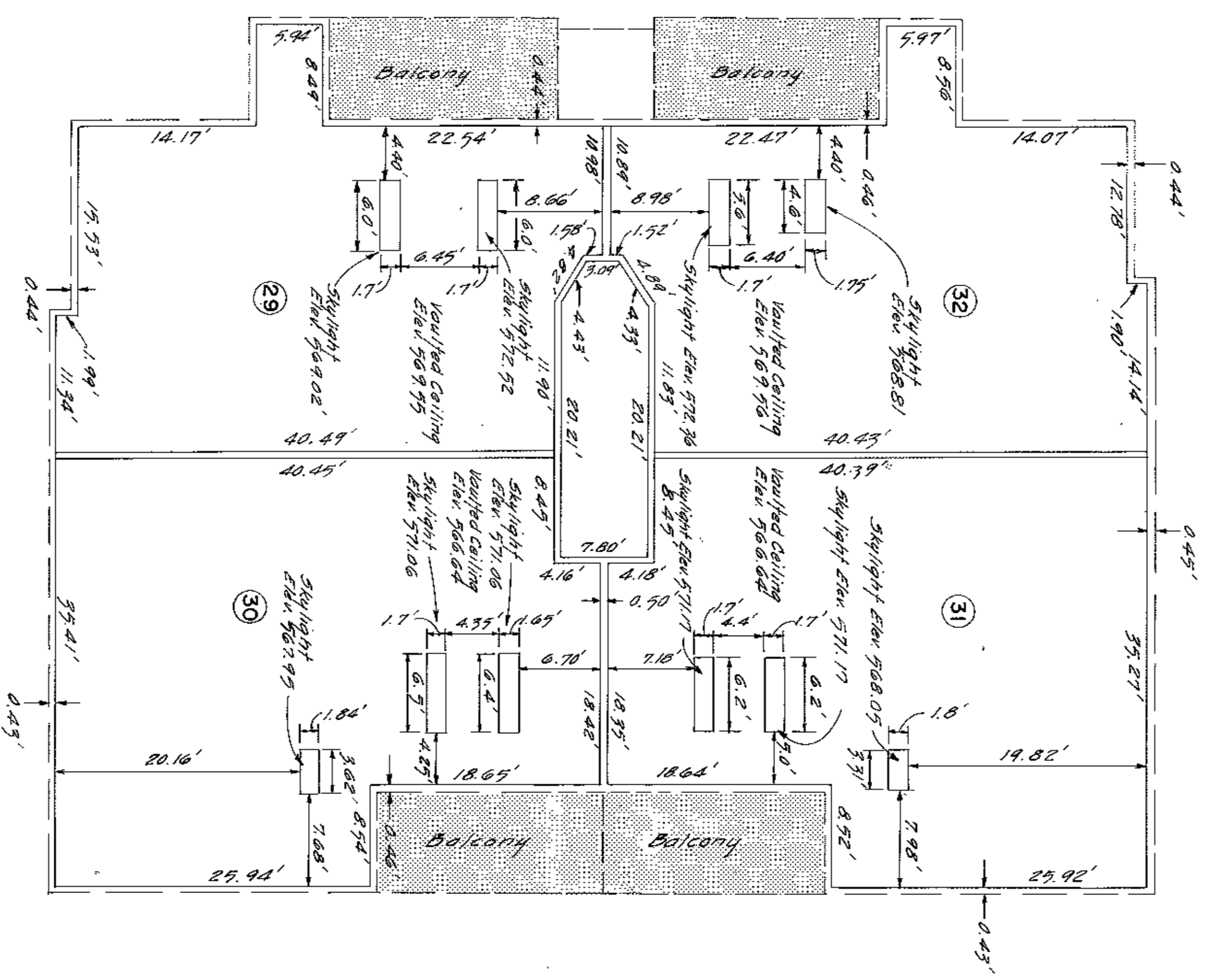
FIRST FLOOR
FIRST FLOOR ELEV. 544.97
CEILING ELEV. 553.02

BUILDING "D"
PHASE IV

SPINDLEWICK, A CONDOMINIUM

COLSTON BUILDING & DEVELOPING CO.
41 Highwood Drive
Louisville, Ky. 40206

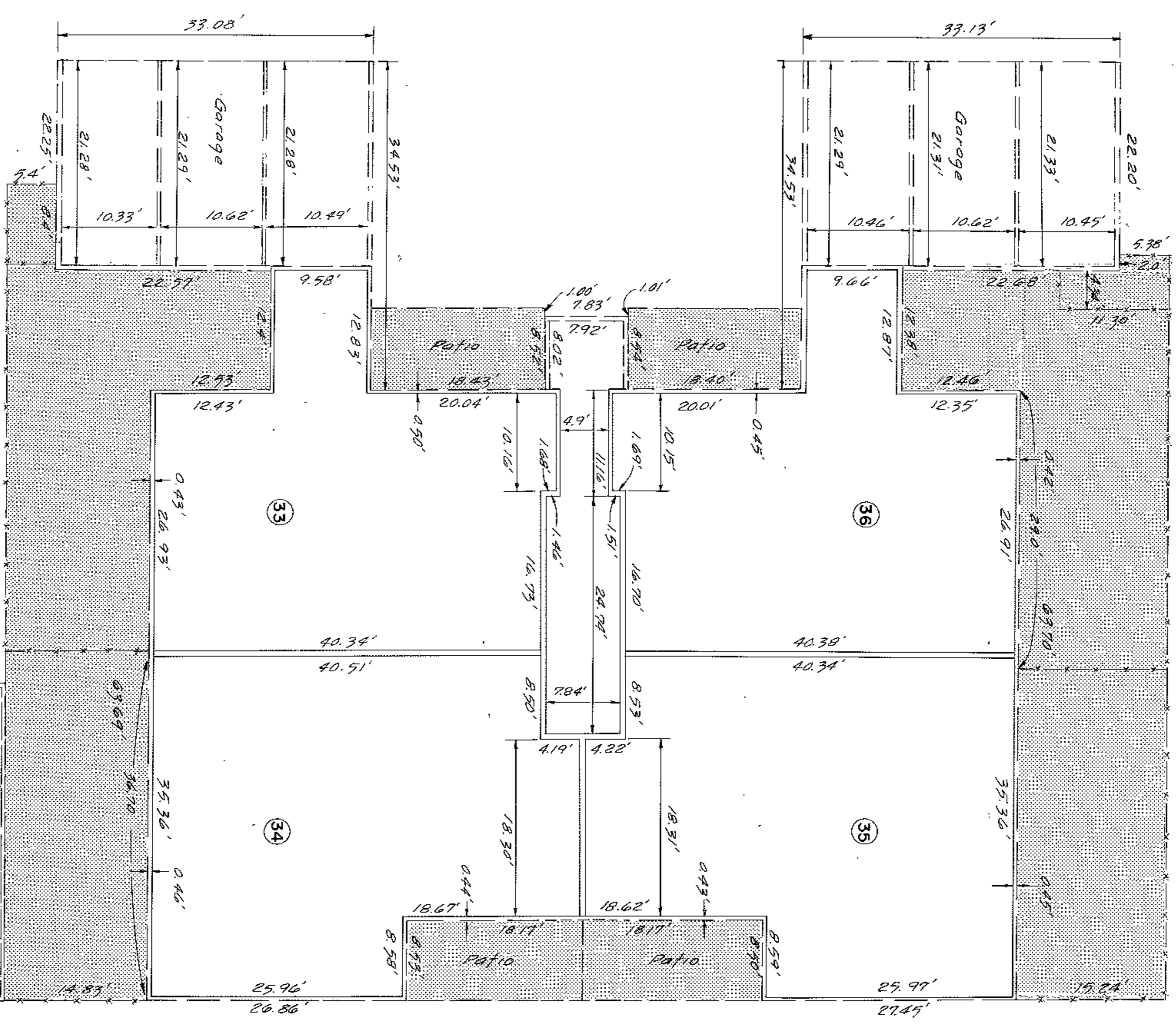
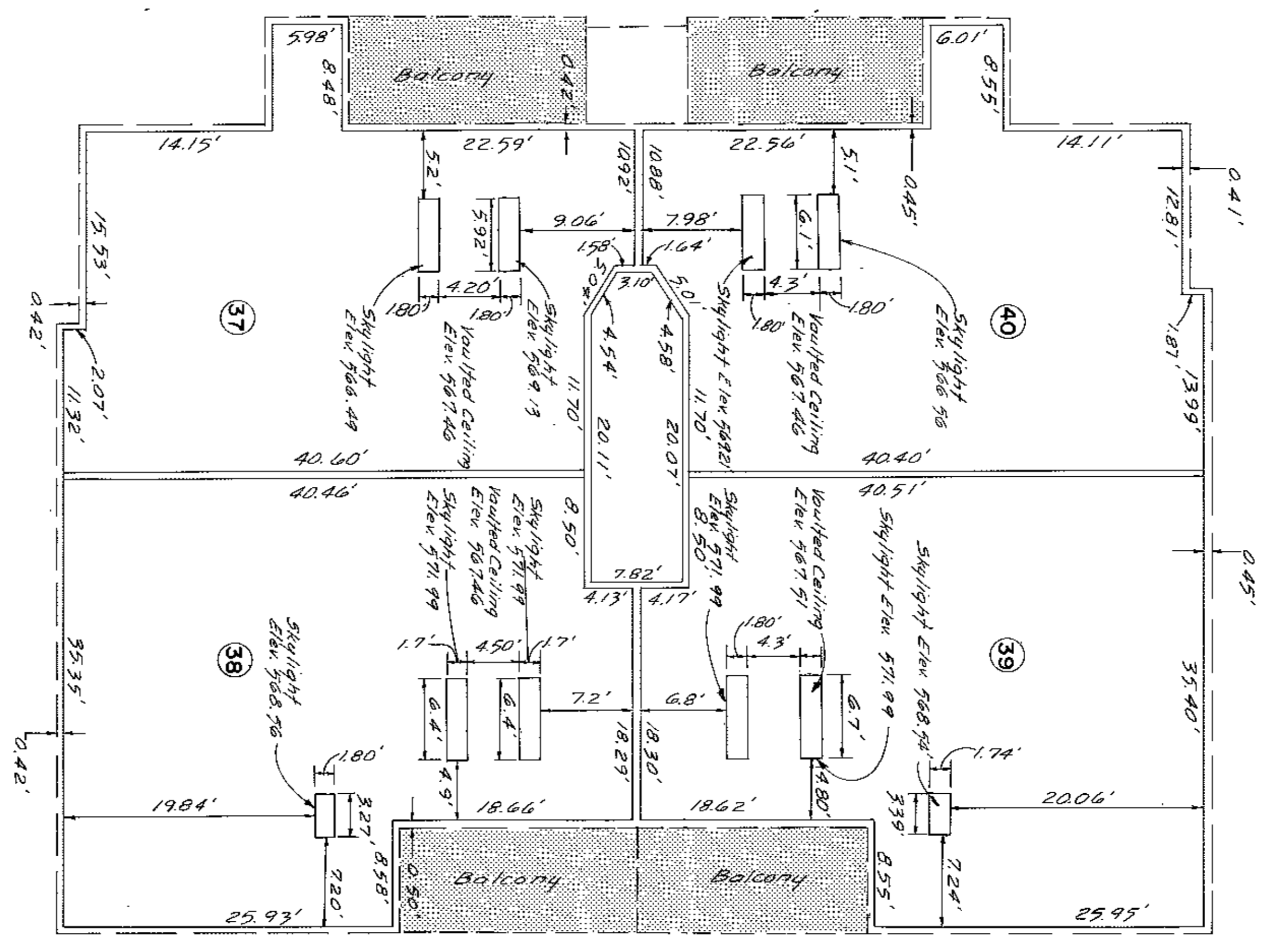
SECOND FLOOR
SECOND FLOOR ELEV. 554.02
CEILING ELEV. 562.07



REVISIONS			PROJECT DATA		
No.	Date	Description	No.	Type	Date
			200-618	Civil	Aug. 1988

DOT
Daugherty & Trautwein
3117 FAYETTEVILLE ROAD
LOUISVILLE, KY 40228

40x50



REVISIONS	
No.	Date

PROJECT DATA	
No.	200-61B
Type	Civil
Date	July 1988
Scale	1" = 8'-0"
By	BRV
Checked	C.F.W.



SPINDLEWICK, A CONDOMINIUM
COLSTON BUILDING & DEVELOPING CO.
41 Highwood Drive
Louisville, Ky 40206

4DXS1

7/19/88
J. Williams
7/19/88
7/19/88
7/19/88
7/19/88